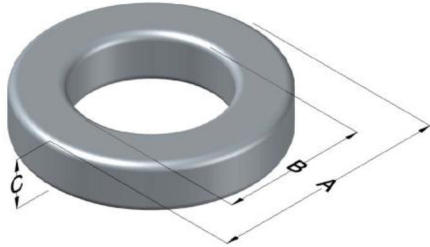




C058930A2HT15

110 Delta Drive
 Pittsburgh, PA 15238
 NAFTA Sales: (1)800-245-3984
 HK Sales : (852)3102-9337
 magnetics@spang.com
 www.mag-inc.com



High Flux Permeability (μ)	A_L (nH/T ²)	Core Marking			Coating Color
		Lot Number	Part Number	Inductance Grade	
125	197 \pm 8%	XXXXXX	58930A2HT15	X	Khaki

Dimensions	Uncoated		Coated Limits			Packaging
	(mm)	(in)	(mm)	(in)		
OD (A)	26.92	1.060	27.69	1.090	max	Cardboard cut-outs Box Qty= 320 pcs
ID (B)	14.73	0.580	14.10	0.555	min	
HT (C)	14	0.552	15	0.590	max	

Electrical Characteristics			Physical Characteristics						
Watt Loss @ 100 kHz, 100mT max (mW/cm ³)	DC Bias min (oersteds)		Voltage Breakdown wire to wire min (V _{AC})	Break Strength min (kg)	Window Area W _A (mm ²)	Cross Section A _e (mm ²)	Path Length L _e (mm)	Volume V _e (mm ³)	Weight (g)
	80%	50%							
1000	46	81	3000	77.0	156	82.1	63.5	5210	42

Winding Information					Temperature Rating	
Winding Length Per Turn				Wound Coil Dimensions (mm)		Curie Temp: 500°C
Winding Factor	(mm)	Winding Factor	(mm)	40% Winding Factor		Coating Temp (Continuous up to): 200°C
				OD	30.0	
				HT	19.5	Notes:
				Max OD	37.3	
				Max HT	27.0	
0%	43.6	40%	50.8	Completely Full Window		
20%	47.1	45%	51.8	Surface Area (mm ²)		
25%	48.0	50%	52.7			
30%	48.9	60%	54.9	Unwound Core		2,900
35%	49.8	70%	57.4	40% Winding Factor		4,100

