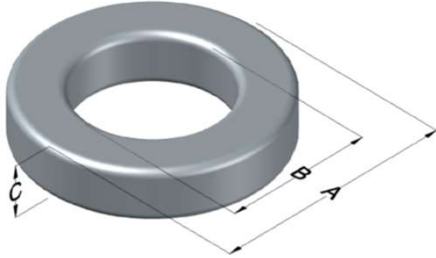




C058328A2

110 Delta Drive
 Pittsburgh, PA 15238
 NAFTA Sales: (1)800-245-3984
 HK Sales : (852)3102-9337
 magnetics@spang.com
 www.mag-inc.com



High Flux Permeability (μ)	A_L (nH/T ²)	Core Marking			Coating Color
		Lot Number	Part Number	Inductance Grade	
90	84 \pm 8%	XXXXXX	58328A2	X	Khaki

Dimensions	Uncoated		Coated Limits			Packaging
	(mm)	(in)	(mm)	(in)		
OD (A)	35.81	1.410	36.70	1.445	max	Cardboard cut-outs Box Qty= 220 pcs
ID (B)	22.35	0.880	21.54	0.848	min	
HT (C)	10.46	0.412	11.35	0.447	max	

Electrical Characteristics			Physical Characteristics						
Watt Loss @ 100kHz, 100mT max (mW/cm ³)	DC Bias min (oersteds)		Voltage Breakdown wire to wire min (V _{AC})	Break Strength min (kg)	Window Area W _a (mm ²)	Cross Section A _e (mm ²)	Path Length L _e (mm)	Volume V _e (mm ³)	Weight (g)
	80%	50%							
950	60	110	3000	80.0	364	67.9	89.7	6,090	38.9

Winding Information					Temperature Rating	
Winding Length Per Turn				Wound Coil Dimensions (mm)		Curie Temp: 500°C
Winding Factor	(mm)	Winding Factor	(mm)	40% Winding Factor	OD	41.1
					HT	18.0
0%	37.9	40%	48.8	Completely Full Window	Max OD	43.3
20%	43.4	45%	50.5		Max HT	26.8
25%	44.7	50%	52.0	Surface Area (mm ²)		
30%	46.0	60%	55.4	Unwound Core	3,500	
35%	47.6	70%	59.2	40% Winding Factor	5,500	
Notes:						
Coating Temp (Continuous up to): 200°C						

