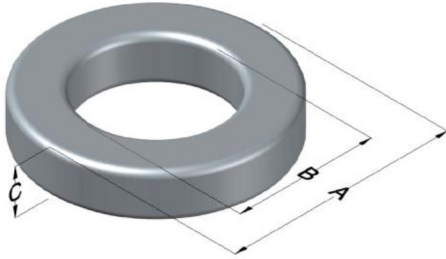




0055118AY

110 Delta Drive
 Pittsburgh, PA 15238
 NAFTA Sales: (1)800-245-3984
 HK Sales : (852)3102-9337
 magnetics@spang.com
 www.mag-inc.com



MPP Permeability (μ)	A_L (nH/T ²)	Core Marking			Coating Color
		Lot Number	Part Number	Inductance Grade	
160	92 ± 8%	XXXXXX	55118A2	X	Clear

Dimensions	Uncoated		Coated Limits			Packaging
	(mm)	(in)	(mm)	(in)		
OD (A)	16.59	0.653	17.09	0.673	max	Bulk Pack 4 bags/box Box Qty= 2000 pcs
ID (B)	10.16	0.400	9.71	0.382	min	
HT (C)	6.35	0.250	6.93	0.273	max	

Electrical Characteristics			Physical Characteristics						
Watt Loss @ 100 kHz, 100mT max(mW/cm ³)	DC Bias min (oersteds)		Voltage Breakdown wire to wire min (V _{AC})	Break Strength min (kg)	Window Area W _A (mm ²)	Cross Section A _e (mm ²)	Path Length L _e (mm)	Volume V _e (mm ³)	Weight (g)
	80%	50%							
900	21.0	39.0	600	23.0	71.2	19.2	41.2	791	6.9360

Winding Information					Temperature Rating	
Winding Length Per Turn				Wound Coil Dimensions (mm)		Curie Temp: 460 °C
Winding Factor	(mm)	Winding Factor	(mm)	40% Winding Factor		Coating Temp (Continuous up to): 130 °C
				OD	18.8	Notes:
				HT	10.1	
				Max OD	23.7	
				Max HT	15.2	
				Surface Area (mm ²)		
				Unwound Core		920
				40% Winding Factor		1,300

