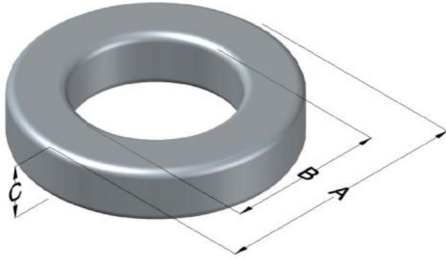




C055039A2

110 Delta Drive
 Pittsburgh, PA 15238
 NAFTA Sales: (1)800-245-3984
 HK Sales : (852)3102-9337
 magnetics@spang.com
 www.mag-inc.com



MPP Permeability (μ)	A_L (nH/T ²)	Core Marking			Coating Color
		Lot Number	Part Number	Inductance Grade	
147	78 ± 8%	XXXXXX	039A2	X	Gray

Dimensions	Uncoated		Coated Limits			Packaging
	(mm)	(in)	(mm)	(in)		
OD (A)	10.16	0.400	10.80	0.425	max	Bulk Pack 4 bags/box Box Qty= 8000 pcs
ID (B)	5.08	0.200	4.57	0.180	min	
HT (C)	3.96	0.156	4.60	0.181	max	

Electrical Characteristics			Physical Characteristics						
Watt Loss @ 100 kHz, 100mT max(mW/cm ³)	DC Bias min (oersteds)		Voltage Breakdown wire to wire min (V _{AC})	Break Strength min (kg)	Window Area W _A (mm ²)	Cross Section A _e (mm ²)	Path Length L _e (mm)	Volume V _e (mm ³)	Weight (g)
	80%	50%							
900	23.0	43.0	1250	12.2	16.4	9.57	23.0	220	1.9380

Winding Information					Temperature Rating	
Winding Length Per Turn				Wound Coil Dimensions (mm)		Curie Temp: 460°C
Winding Factor	(mm)	Winding Factor	(mm)	40% Winding Factor		Coating Temp (Continuous up to): 200°C
				OD	11.5	Notes:
0%	15.4	40%	17.8	HT	5.96	
				Completely Full Window		
20%	16.6	45%	18.1	Max HT	8.46	
25%	16.9	50%	18.4	Surface Area (mm ²)		
30%	17.1	60%	19.2	Unwound Core	370	
35%	17.5	70%	20.0	40% Winding Factor	480	

