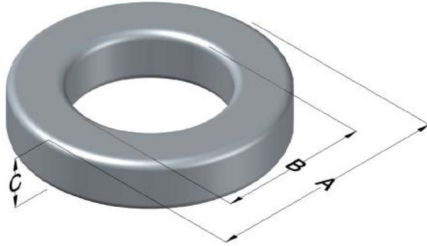




0079912A7

110 Delta Drive
 Pittsburgh, PA 15238
 NAFTA Sales: (1)800-245-3984
 HK Sales : (852)3102-9337
 magnetics@spang.com
 www.mag-inc.com



Kool M μ MAX Permeability (μ)	A _L (nH/T ²)	Core Marking			Coating Color
		Lot Number	Part Number	Inductance Grade	
40	57 ± 8%	XXXXXX	79912A7	N/A	Black

Dimensions	Uncoated		Coated Limits			Packaging
	(mm)	(in)	(mm)	(in)		
OD (A)	77.80	3.063	78.94	3.108	max	Cardboard cut-outs Box Qty= 40 pcs
ID (B)	49.23	1.938	48.21	1.898	min	
HT (C)	15.88	0.625	17.02	0.670	max	

Electrical Characteristics			Physical Characteristics						
Watt Loss @ 100 kHz, 100mT max (mW/cm ³)	DC Bias min (oersteds)		Voltage Breakdown wire to wire min (V _{AC})	Break Strength min (kg)	Window Area W _A (mm ²)	Cross Section A _e (mm ²)	Path Length L _e (mm)	Volume V _e (mm ³)	Weight (g)
	80%	50%							
700	85.0	180	3000	141.0	1,820	221	196	43,400	270

Winding Information					Temperature Rating	
Winding Length Per Turn				Wound Coil Dimensions (mm)		Curie Temp: 500°C
Winding Factor	(mm)	Winding Factor	(mm)	40% Winding Factor	OD	86.6
					HT	32.3
0%	64.8	40%	89.2	Completely Full Window	Max OD	113
20%	77.3	45%	93.2		Max HT	57.7
25%	80.1	50%	97.0	Surface Area (mm ²)		
30%	83.1	60%	104	Unwound Core		13,000
35%	86.5	70%	113	40% Winding Factor		24,000
Coating Temp (Continuous up to): 200°C						
Notes:						

