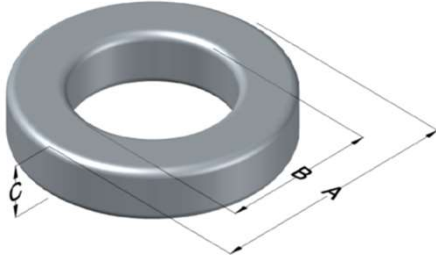




0079894A7HT24

110 Delta Drive
 Pittsburgh, PA 15238
 NAFTA Sales: (1)800-245-3984
 HK Sales : (852)3102-9337
 magnetics@spang.com
 www.mag-inc.com



Kool M μ MAX Permeability (μ)	A _L (nH/T ²)	Core Marking			Coating Color
		Lot Number	Part Number	Inductance Grade	
60	163 ± 8%	XXXXXX	79894A7HT24	N/A	Black

Dimensions	Uncoated		Coated Limits			Packaging
	(mm)	(in)	(mm)	(in)		
OD (A)	26.92	1.060	27.69	1.090	max	Cardboard cut-outs Box Qty = TBD
ID (B)	14.73	0.580	14.10	0.555	min	
HT (C)	22.99	0.905	24.00	0.945	max	

Electrical Characteristics			Physical Characteristics						
Watt Loss @ 100kHz, 100mT max (mW/cm ³)	DC Bias min (oersteds)		Voltage Breakdown wire to wire min (V _{AC})	Break Strength min (kg)	Window Area W _a (mm ²)	Cross Section A _e (mm ²)	Path Length L _e (mm)	Volume V _e (mm ³)	Weight (g)
	80%	50%							
700	58	116	2000	77.0	156	137	63.5	8,720	62.2

Winding Information					Temperature Rating	
Winding Length Per Turn				Wound Coil Dimensions (mm)		Curie Temp: 500°C
Winding Factor	(mm)	Winding Factor	(mm)	40% Winding Factor	OD	30.9
					HT	28.8
0%	61.6	40%	68.9	Completely Full Window	Max OD	30.9
20%	65.2	45%	69.8		Max HT	33.6
25%	66.2	50%	71.0	Surface Area (mm ²)		
30%	66.9	60%	73.1	Unwound Core		4,000
35%	67.9	70%	75.6	40% Winding Factor		5,000
Coating Temp (Continuous up to): 200°C						
Notes:						

