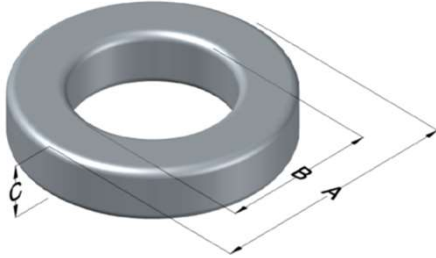




**0078439A9**

110 Delta Drive  
 Pittsburgh, PA 15238  
 NAFTA Sales: (1)800-245-3984  
 HK Sales : (852)3102-9337  
 magnetics@spang.com  
 www.mag-inc.com



XFlux Permeability ( $\mu$ )	$A_L$ (nH/T <sup>2</sup> )	Core Marking			Coating Color
		Lot Number	Part Number	Inductance Grade	
60	135 ± 8%	XXXXXX	78439A9	N/A	Brown

Dimensions	Uncoated		Coated Limits			Packaging
	(mm)	(in)	(mm)	(in)		
OD (A)	46.74	1.840	48.01	1.890	max	Cardboard cut-outs Box Qty= 105 pcs
ID (B)	24.13	0.950	22.94	0.903	min	
HT (C)	18.03	0.710	19.30	0.760	max	

Electrical Characteristics			Physical Characteristics						
Watt Loss @ 50kHz, 100mT max (mW/cm <sup>3</sup> )	DC Bias min (oersteds)		Voltage Breakdown wire to wire min (V <sub>AC</sub> )	Break Strength min (kg)	Window Area W <sub>a</sub> (mm <sup>2</sup> )	Cross Section A <sub>e</sub> (mm <sup>2</sup> )	Path Length L <sub>e</sub> (mm)	Volume V <sub>e</sub> (mm <sup>3</sup> )	Weight (g)
	80%	50%							
725	80	150	8000	233.0	413	198	107.4	21,300	161

Winding Information					Temperature Rating	
Winding Length Per Turn				Wound Coil Dimensions (mm)		Curie Temp: 700°C
Winding Factor	(mm)	Winding Factor	(mm)	40% Winding Factor	OD	52.8
					HT	26.5
0%	63.7	40%	75.5	Completely Full Window	Max OD	52.8
20%	69.7	45%	77.3		Max HT	36.1
25%	71.1	50%	78.9	Surface Area (mm <sup>2</sup> )		
30%	72.3	60%	82.6	Unwound Core	7,100	
35%	74.1	70%	86.8	40% Winding Factor	9,700	
Notes:						
Coating Temp (Continuous up to): 200°C						

