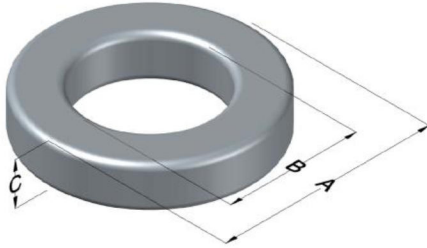




0058721A2

110 Delta Drive
 Pittsburgh, PA 15238
 NAFTA Sales: (1)800-245-3984
 HK Sales : (852)3102-9337
 magnetics@spang.com
 www.mag-inc.com



High Flux Permeability (μ)	A_L (nH/T ²)	Core Marking			Coating Color
		Lot Number	Part Number	Inductance Grade	
40	48 ± 8%	XXXXXX	58721A2	N/A	Khaki

Dimensions	Uncoated		Coated Limits			Packaging
	(mm)	(in)	(mm)	(in)		
OD (A)	50.80	2.000	51.69	2.035	max	Cardboard cut-outs Box Qty= 90 pcs
ID (B)	31.75	1.250	30.94	1.218	min	
HT (C)	13.5	0.530	14.35	0.565	max	

Electrical Characteristics			Physical Characteristics						
Watt Loss @ 100 kHz, 50mT max (mW/cm ³)	DC Bias min (oersteds)		Voltage Breakdown wire to wire min (V _{AC})	Break Strength min (kg)	Window Area W _A (mm ²)	Cross Section A _e (mm ²)	Path Length L _e (mm)	Volume V _e (mm ³)	Weight (g)
	90%	50%							
510	110	215	3000	93.0	751	125.1	127.3	15,900	114

Winding Information					Temperature Rating	
Winding Length Per Turn				Wound Coil Dimensions (mm)		Curie Temp: 500°C
Winding Factor	(mm)	Winding Factor	(mm)	40% Winding Factor		Coating Temp (Continuous up to): 200°C
				OD	56.6	
0%	49.5	40%	65.5	Completely Full Window		Notes:
				HT	24.2	
20%	57.4	45%	67.7	Max OD	72.4	
25%	59.6	50%	70.1	Max HT	40.6	
30%	61.0	60%	74.9	Surface Area (mm ²)		
35%	63.5	70%	80.3	Unwound Core	6,400	
				40% Winding Factor	11,000	

