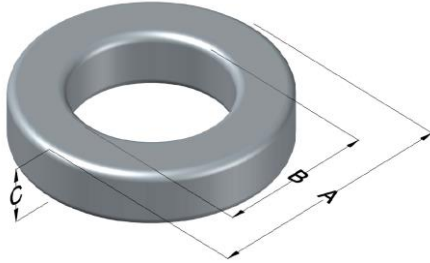




0058717A2X3

110 Delta Drive
 Pittsburgh, PA 15238
 NAFTA Sales: (1)800-245-3984
 HK Sales : (852)3102-9337
 magnetics@spang.com



High Flux Permeability (μ)	A_L (nH/T ²)	Core Marking			Coating Color
		Lot Number	Part Number	Inductance Grade	
26	96 ± 8%	XXXXXX	58717A2X3	N/A	Khaki

Dimensions	Uncoated		Coated Limits			Packaging
	(mm)	(in)	(mm)	(in)		
OD (A)	50.80	2.000	51.99	2.047	max	Cardboard cut-outs Box Qty = TBD
ID (B)	31.75	1.250	30.34	1.194	min	
HT (C)	40.38	1.590	42.02	1.654	max	

Electrical Characteristics			Physical Characteristics						
Watt Loss @ 100kHz, 100mT max (mW/cm ³)	DC Bias min (oersteds)		Voltage Breakdown wire to wire min (V _{AC})	Break Strength min (kg)	Window Area W _a (mm ²)	Cross Section A _e (mm ²)	Path Length L _e (mm)	Volume V _e (mm ³)	Est. Weight (g)
	80%	50%							
1250	200	375	3000	93.0	752	374	127	47,700	365

Winding Information					Temperature Rating	
Winding Length Per Turn				Wound Coil Dimensions (mm)		Curie Temp: 500°C
Winding Factor	(mm)	Winding Factor	(mm)	40% Winding Factor		Coating Temp (Continuous up to): 200°C
				OD	58.4	Notes:
0%	106	40%	121	HT	51.6	
				Completely Full Window		
20%	113	45%	124	Max HT	64.4	
25%	115	50%	126	Surface Area (mm ²)		
30%	117	60%	130	Unwound Core	14,000	
35%	119	70%	136	40% Winding Factor	18,000	

