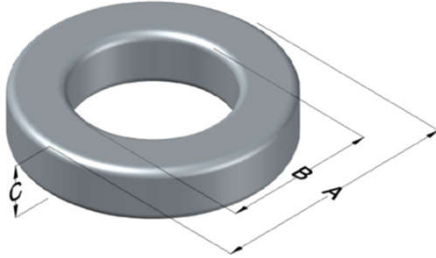




**0058118AY**

110 Delta Drive  
 Pittsburgh, PA 15238  
 NAFTA Sales: (1)800-245-3984  
 HK Sales : (852)3102-9337  
 magnetics@spang.com  
 www.mag-inc.com



High Flux Permeability ( $\mu$ )	$A_L$ (nH/T <sup>2</sup> )	Core Marking			Coating Color
		Lot Number	Part Number	Inductance Grade	
160	92 ± 8%	XXXXXX	58118AY	N/A	Khaki

Dimensions	Uncoated		Coated Limits			Packaging
	(mm)	(in)	(mm)	(in)		
OD (A)	16.59	0.653	17.09	0.673	max	Bulk Pack 4 bags/box Box Qty= 2000 pcs
ID (B)	10.16	0.400	9.71	0.382	min	
HT (C)	6.35	0.250	6.93	0.273	max	

Electrical Characteristics			Physical Characteristics						
Watt Loss @ 100kHz, 100mT max (mW/cm <sup>3</sup> )	DC Bias min (oersteds)		Voltage Breakdown wire to wire min (V <sub>AC</sub> )	Break Strength min (kg)	Window Area W <sub>a</sub> (mm <sup>2</sup> )	Cross Section A <sub>e</sub> (mm <sup>2</sup> )	Path Length L <sub>e</sub> (mm)	Volume V <sub>e</sub> (mm <sup>3</sup> )	Est. Weight (g)
	80%	50%							
1500	32	60	1250	TBD	71.3	19.2	41.2	793	6.70

Winding Information					Temperature Rating	
Winding Length Per Turn				Wound Coil Dimensions (mm)		Curie Temp: 500°C
Winding Factor	(mm)	Winding Factor	(mm)	40% Winding Factor	OD	19.1
					HT	9.93
0%	21.2	40%	26.2	Completely Full Window	Max OD	20.1
20%	23.8	45%	27.0		Max HT	13.9
25%	24.4	50%	27.7	Surface Area (mm <sup>2</sup> )		
30%	24.9	60%	29.2	Unwound Core	890	
35%	25.7	70%	31.0	40% Winding Factor	1,300	
Notes:						
Coating Temp (Continuous up to): 200°C						

