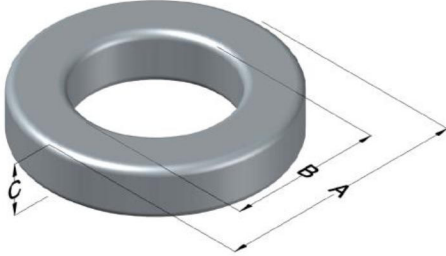




0058040AY

110 Delta Drive
 Pittsburgh, PA 15238
 NAFTA Sales: (1)800-245-3984
 HK Sales : (852)3102-9337
 magnetics@spang.com
 www.mag-inc.com



High Flux Permeability (μ)	A_L (nH/T ²)	Core Marking			Coating Color
		Lot Number	Part Number	Inductance Grade	
125	66 ± 8%	N/A	N/A	N/A	Clear

Dimensions	Uncoated		Coated Limits			Packaging
	(mm)	(in)	(mm)	(in)		
OD (A)	10.16	0.400	10.62	0.418	max	Bulk Pack 4 bags/box Box Qty= 8000 pcs
ID (B)	5.08	0.200	4.75	0.187	min	
HT (C)	3.96	0.156	4.42	0.174	max	

Electrical Characteristics			Physical Characteristics						
Watt Loss @ 100 kHz, 100mT max (mW/cm ³)	DC Bias min (oersteds)		Voltage Breakdown wire to wire min (V _{AC})	Break Strength min (kg)	Window Area W _A (mm ²)	Cross Section A _e (mm ²)	Path Length L _e (mm)	Volume V _e (mm ³)	Weight (g)
	80%	50%							
1000	46.0	81.0	600	6.3	17.7	9.57	23.0	220	1.8000

Winding Information					Temperature Rating	
Winding Length Per Turn				Wound Coil Dimensions (mm)		Curie Temp: 500°C
Winding Factor	(mm)	Winding Factor	(mm)	40% Winding Factor		Coating Temp (Continuous up to): 130°C
				OD	11.5	Notes:
				HT	5.96	
				Max OD	14.1	
				Max HT	8.46	
				Surface Area (mm ²)		
				Unwound Core		370
				40% Winding Factor		480

Typical DC Bias Performance

