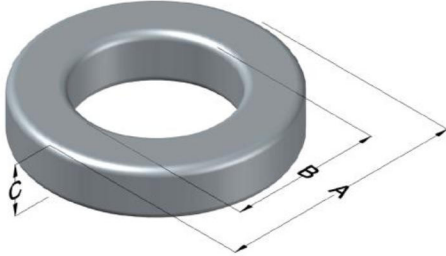




**0058022A2**

110 Delta Drive  
 Pittsburgh, PA 15238  
 NAFTA Sales: (1)800-245-3984  
 HK Sales : (852)3102-9337  
 magnetics@spang.com  
 www.mag-inc.com



High Flux Permeability ( $\mu$ )	$A_L$ (nH/T <sup>2</sup> )	Core Marking			Coating Color
		Lot Number	Part Number	Inductance Grade	
26	10 $\pm$ 8%	XXXXXX	022	N/A	Khaki

Dimensions	Uncoated		Coated Limits			Packaging
	(mm)	(in)	(mm)	(in)		
OD (A)	6.35	0.250	6.99	0.275	max	Bulk Pack 4 bags/box Box Qty= 10,000 pcs
ID (B)	2.79	0.110	2.29	0.090	min	
HT (C)	2.79	0.110	3.43	0.135	max	

Electrical Characteristics			Physical Characteristics						
Watt Loss @ 100 kHz, 100mT max (mW/cm <sup>3</sup> )	DC Bias min (oersteds)		Voltage Breakdown wire to wire min (V <sub>AC</sub> )	Break Strength min (kg)	Window Area W <sub>A</sub> (mm <sup>2</sup> )	Cross Section A <sub>e</sub> (mm <sup>2</sup> )	Path Length L <sub>e</sub> (mm)	Volume V <sub>e</sub> (mm <sup>3</sup> )	Weight (g)
	80%	50%							
1250	200	375	1250	7.3	4.08	4.70	13.6	64.0	0.4730

Winding Information					Temperature Rating	
Winding Length Per Turn				Wound Coil Dimensions (mm)		Curie Temp: 500°C
Winding Factor	(mm)	Winding Factor	(mm)	40% Winding Factor		Coating Temp (Continuous up to): 200°C
				OD	7.34	Notes:
				HT	4.12	
				Completely Full Window		
				Max OD	8.81	
				Max HT	5.38	
				Surface Area (mm <sup>2</sup> )		
				Unwound Core	170	
				40% Winding Factor		200

