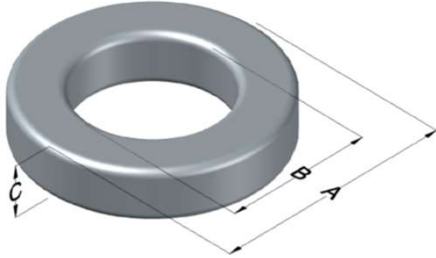




0055591A2

110 Delta Drive
 Pittsburgh, PA 15238
 NAFTA Sales: (1)800-245-3984
 HK Sales : (852)3102-9337
 magnetics@spang.com
 www.mag-inc.com



MPP Permeability (μ)	A_L (nH/T ²)	Core Marking			Coating Color
		Lot Number	Part Number	Inductance Grade	
40	25 \pm 8%	XXXXXX	55591A2	N/A	Grey

Dimensions	Uncoated		Coated Limits			Packaging
	(mm)	(in)	(mm)	(in)		
OD (A)	34.29	1.350	35.18	1.385	max	Cardboard cut-outs Box Qty= 300 pcs
ID (B)	23.37	0.920	22.56	0.888	min	
HT (C)	8.89	0.350	9.78	0.385	max	

Electrical Characteristics			Physical Characteristics						
Watt Loss @ 100kHz, 100mT max (mW/cm ³)	DC Bias min (oersteds)		Voltage Breakdown wire to wire min (V _{AC})	Break Strength min (kg)	Window Area W _a (mm ²)	Cross Section A _e (mm ²)	Path Length L _e (mm)	Volume V _e (mm ³)	Weight (g)
	800	80%							
	80	135	3000	54.0	400	46.4	89.5	4,150	30.8

Winding Information					Temperature Rating				
Winding Length Per Turn				Wound Coil Dimensions (mm)			Curie Temp: 460°C		
Winding Factor	(mm)	Winding Factor	(mm)	40% Winding Factor	OD	40.0			
					HT	17.0			
0%	32.2	40%	43.9	Completely Full Window	Max OD	42.4			
20%	38.1	45%	45.7		Max HT	26.6			
25%	39.5	50%	47.2	Surface Area (mm ²)					
30%	40.7	60%	50.8						
35%	42.5	70%	55.0						
Unwound Core					2,900				
40% Winding Factor					5,100				
								Coating Temp (Continuous up to): 200°C	
								Notes:	

