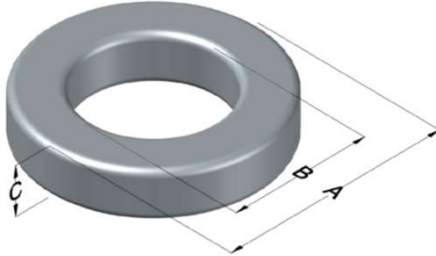




0055212A2

110 Delta Drive
 Pittsburgh, PA 15238
 NAFTA Sales: (1)800-245-3984
 HK Sales : (852)3102-9337
 magnetics@spang.com
 www.mag-inc.com



MPP Permeability (μ)	A_L (nH/T ²)	Core Marking			Coating Color
		Lot Number	Part Number	Inductance Grade	
40	50 \pm 8%	XXXXXX	55212A2	N/A	Grey

Dimensions	Uncoated		Coated Limits			Packaging
	(mm)	(in)	(mm)	(in)		
OD (A)	57.15	2.250	58.04	2.285	max	Cardboard cut-outs Box Qty= 90 pcs
ID (B)	35.56	1.400	34.75	1.368	min	
HT (C)	13.97	0.550	14.86	0.585	max	

Electrical Characteristics			Physical Characteristics						
Watt Loss @ 100kHz, 100mT max (mW/cm ³)	DC Bias min (oersteds)		Voltage Breakdown wire to wire min (V _{AC})	Break Strength min (kg)	Window Area W _a (mm ²)	Cross Section A _e (mm ²)	Path Length L _e (mm)	Volume V _e (mm ³)	Weight (g)
	800	80%							
	80	135	3000	107.0	948	144	143.0	20,700	151

Winding Information					Temperature Rating	
Winding Length Per Turn				Wound Coil Dimensions (mm)		Curie Temp: 460°C
Winding Factor	(mm)	Winding Factor	(mm)	40% Winding Factor	OD	65.2
					HT	25.7
0%	53.0	40%	70.8	Completely Full Window	Max OD	68.8
20%	62.0	45%	73.5		Max HT	40.1
25%	64.2	50%	75.9	Surface Area (mm ²)		
30%	66.0	60%	81.3	Unwound Core	7,700	
35%	68.8	70%	87.5	40% Winding Factor	13,000	
Notes:						
Coating Temp (Continuous up to): 200°C						

